

The True Promise of Broadband as

Nitel Unveils IP Strategy...



Nitel propriety - Louis de Wolff -
Nitel IP Consultant

The New Telecommunications Economy



- With the ongoing globalization of the world economy, communication between companies, interest groups, buyers, and nations is continuously intensified. Traditional national barriers are increasingly removed and with the introduction -of the worldwide Internet an unmatched communication channel has been created.
- Nitel underlines the importance of ICT and therefore decided to invest heavily in infrastructure that supports further penetration of the Internet and the realization of the networked society.

Proposed Roadmap for IP services



Introduction of IP
Wholesale

Roll-out
DSL services

Content
Distribution
Services

Internet
Exchange

Implementation
of IP backbone

Introduction
of VPN and
VOIP services

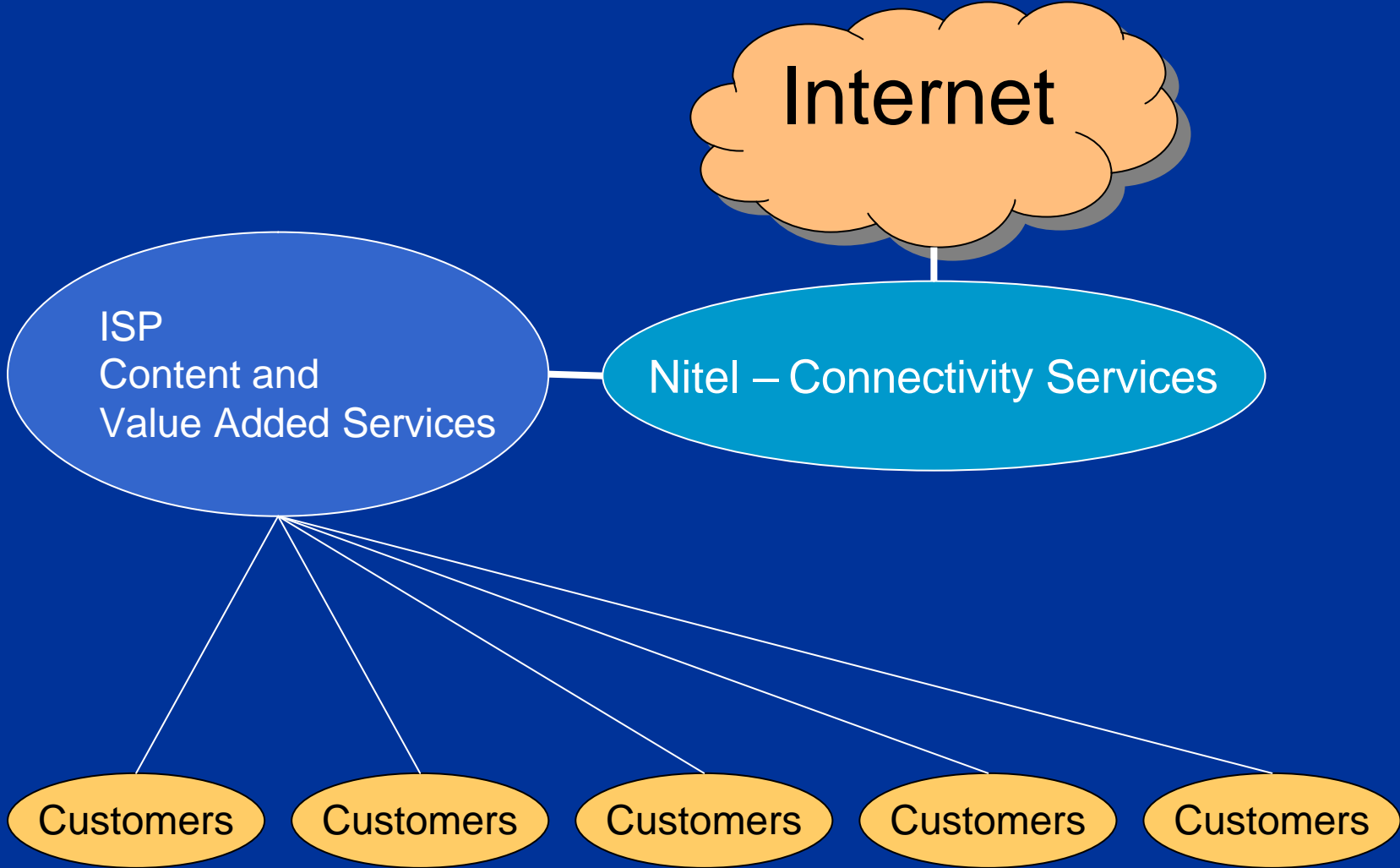
Connection to LINX



23 February, 2005

Nitel propriety - Louis de Wolff -
Nitel IP Consultant

Connectivity services



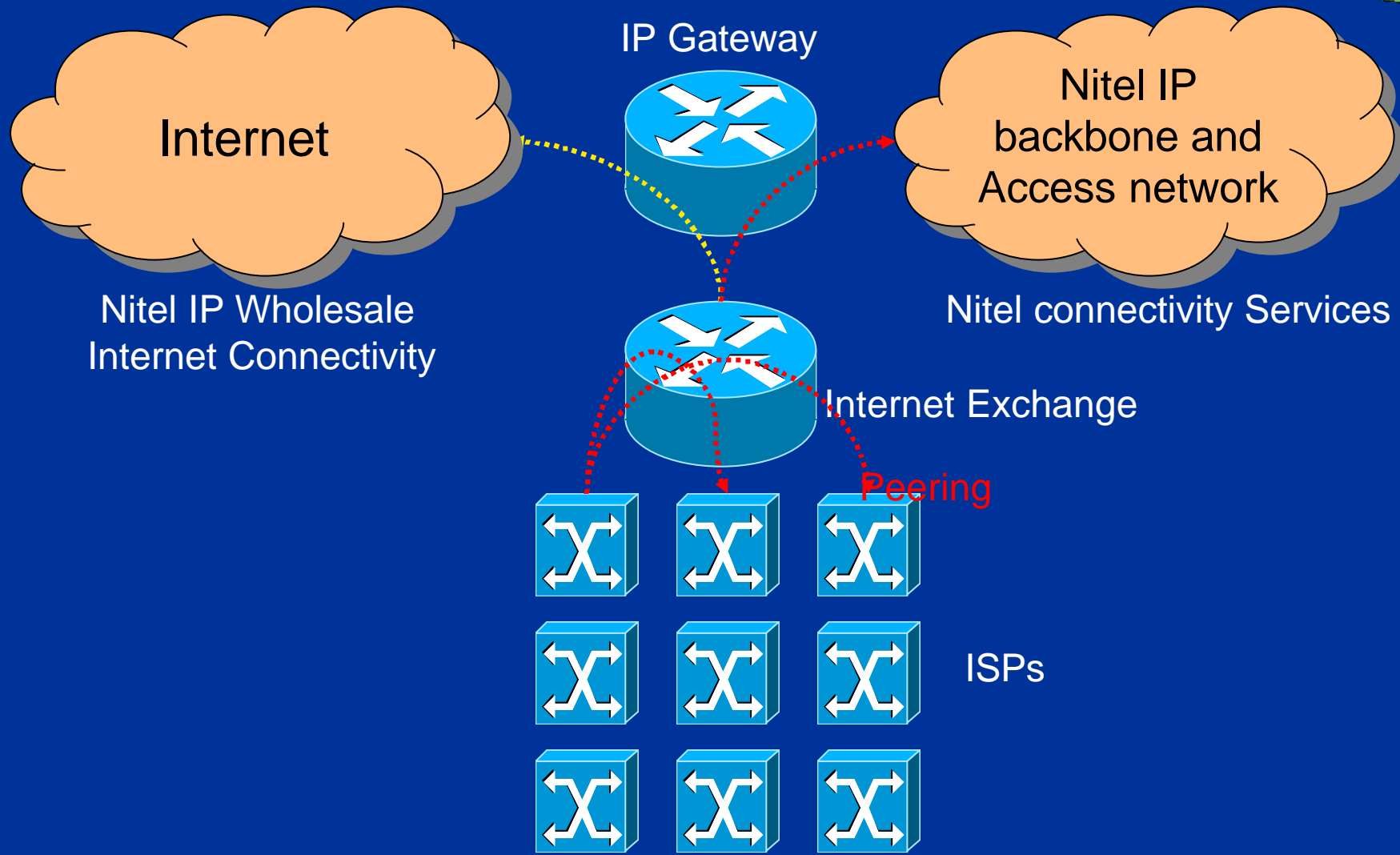
Bandwidth options



Service	IP WholeSale	IP Dedicated Internet Access
64kbit/s		●
128kbit/s		●
256kbit/s		●
512kbit/s		●
1024kbit/s		●
1536kbit/s		●
2048kbit/s		●
Ethernet per Mbit/s	●	
GbE per Mbit/s	●	
2Mbit/s	●	
34bit/s	●	
STM-1	●	

back

LAGOSIX



23 February, 2005

Nitel propriety - Louis de Wolff -
Nitel IP Consultant

Lagos Internet Exchange



Equipment handling the Internet Exchange



Cyber-Center (Co-location area for ISPs)

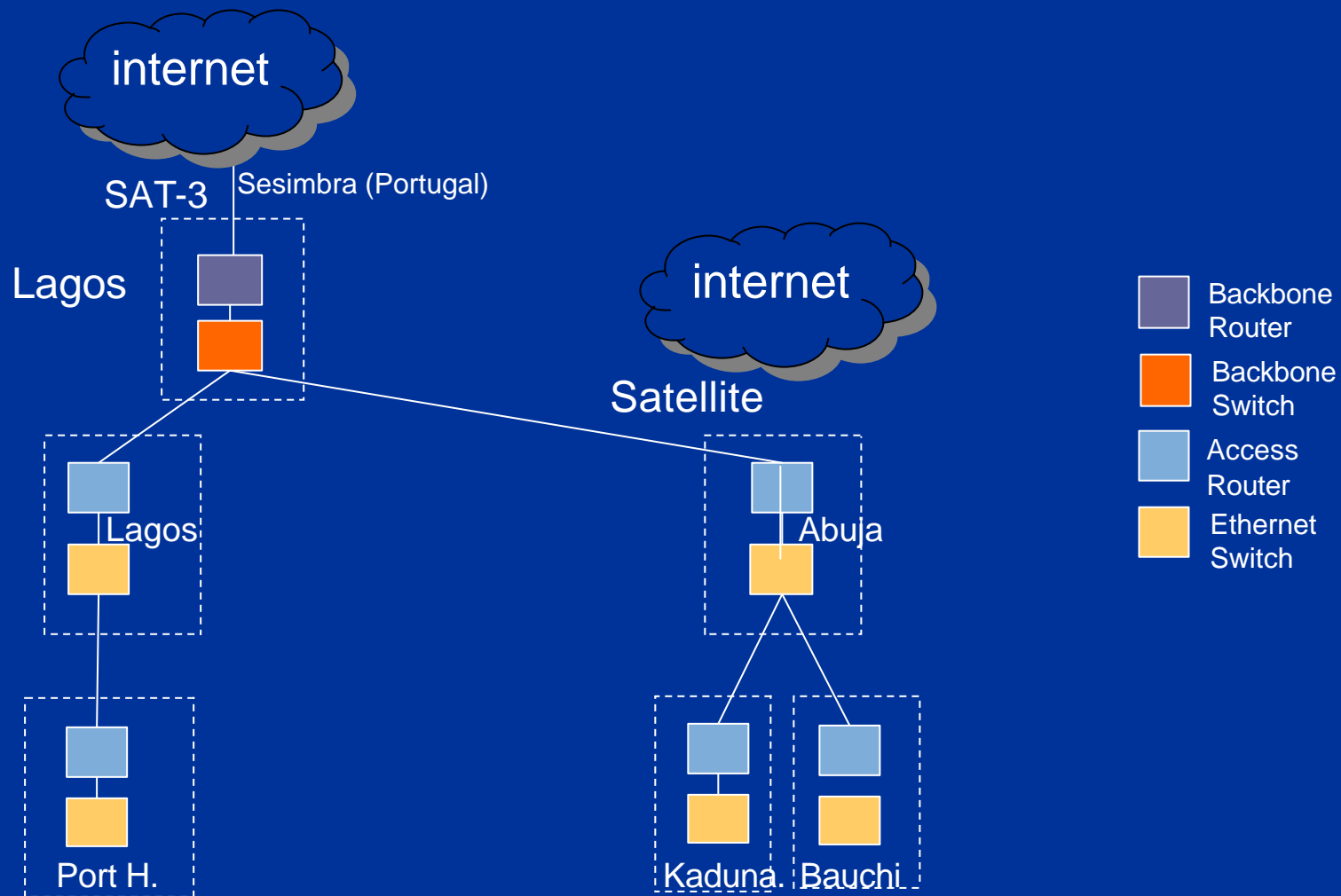
[back](#)

23 February, 2005

Nitel propriety - Louis de Wolff -
Nitel IP Consultant



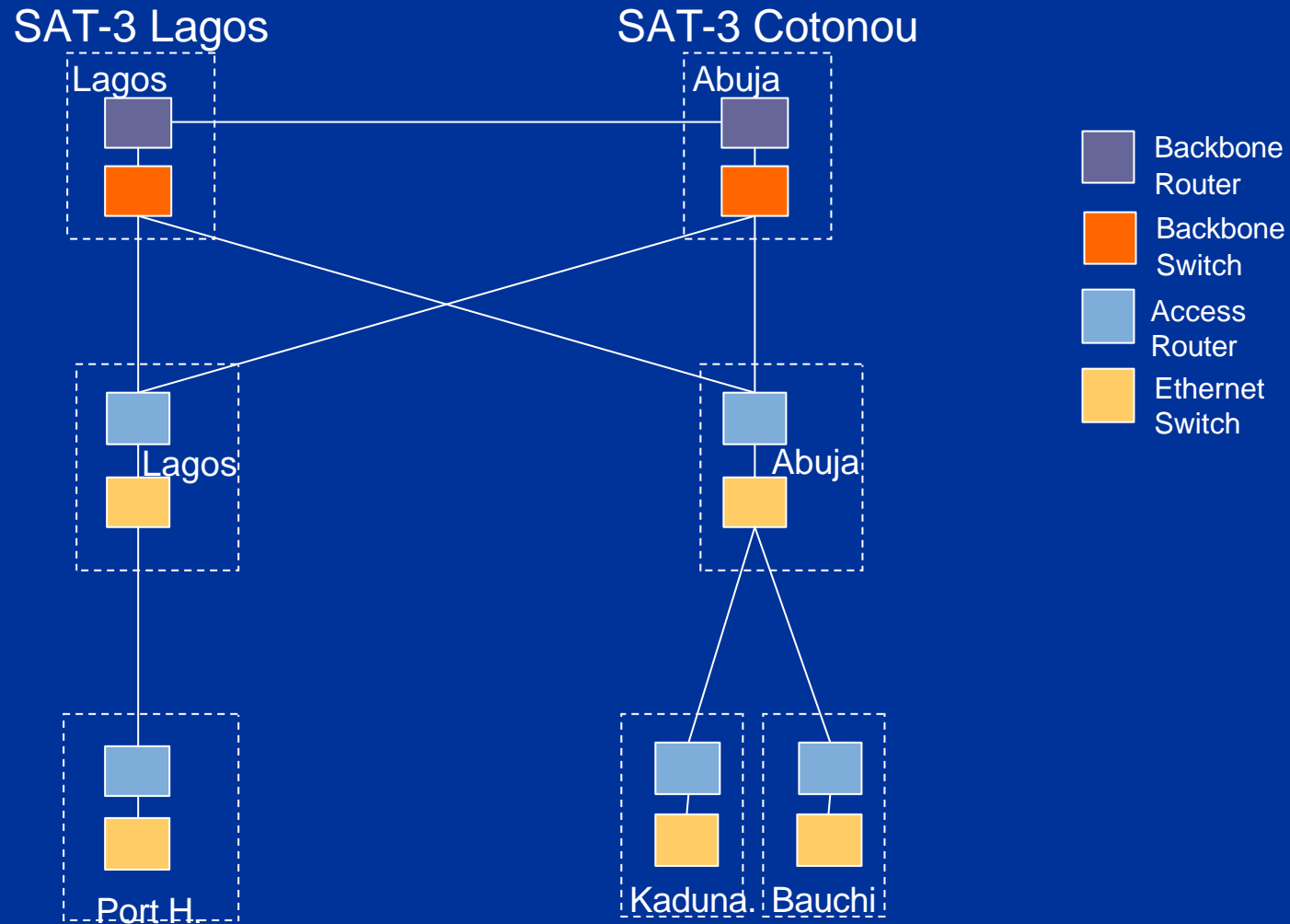
Phase 1: Connection to SAT-3



23 February, 2005

Nitel propriety - Louis de Wolff -
Nitel IP Consultant

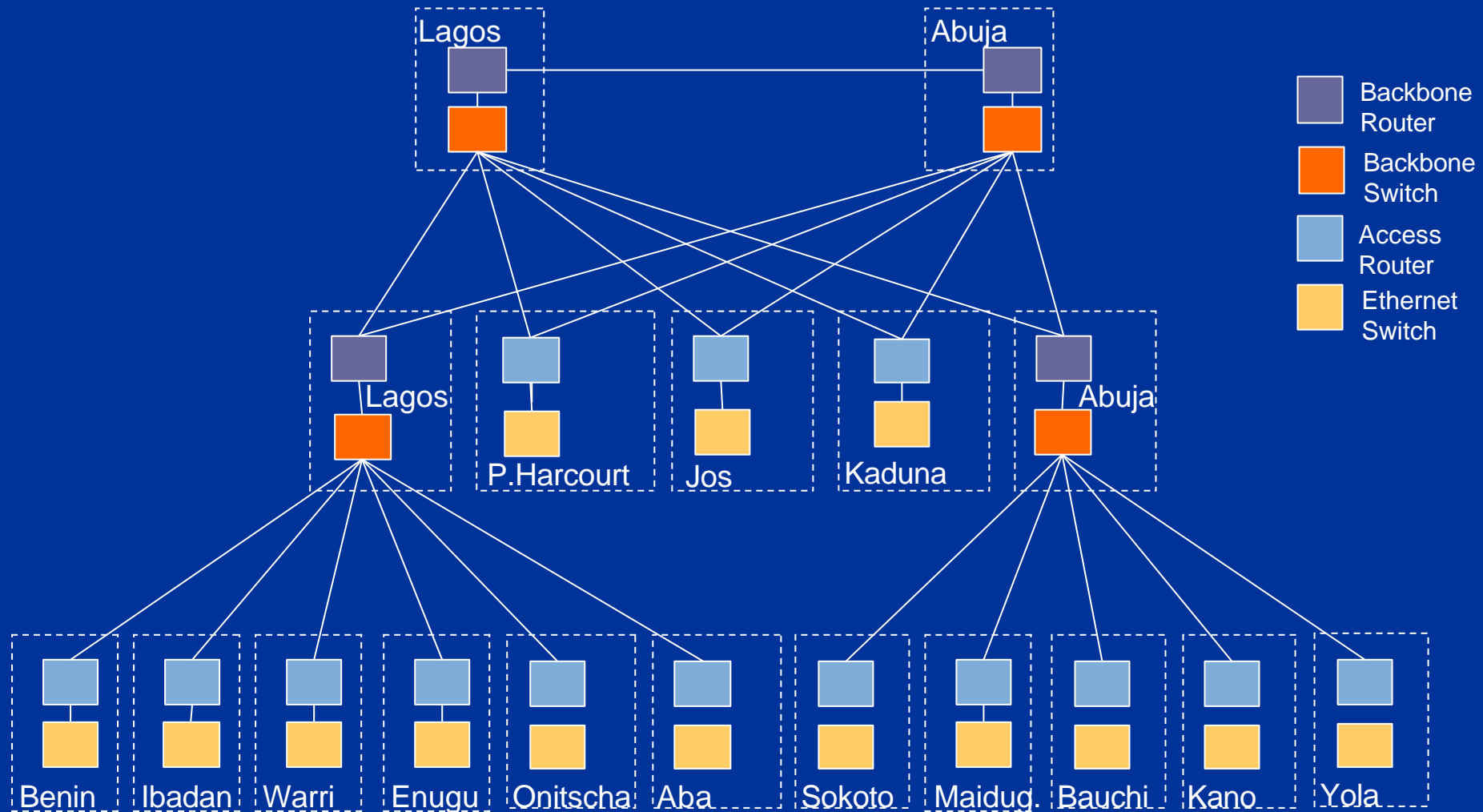
Phase 2: Resiliency to SAT-3



23 February, 2005

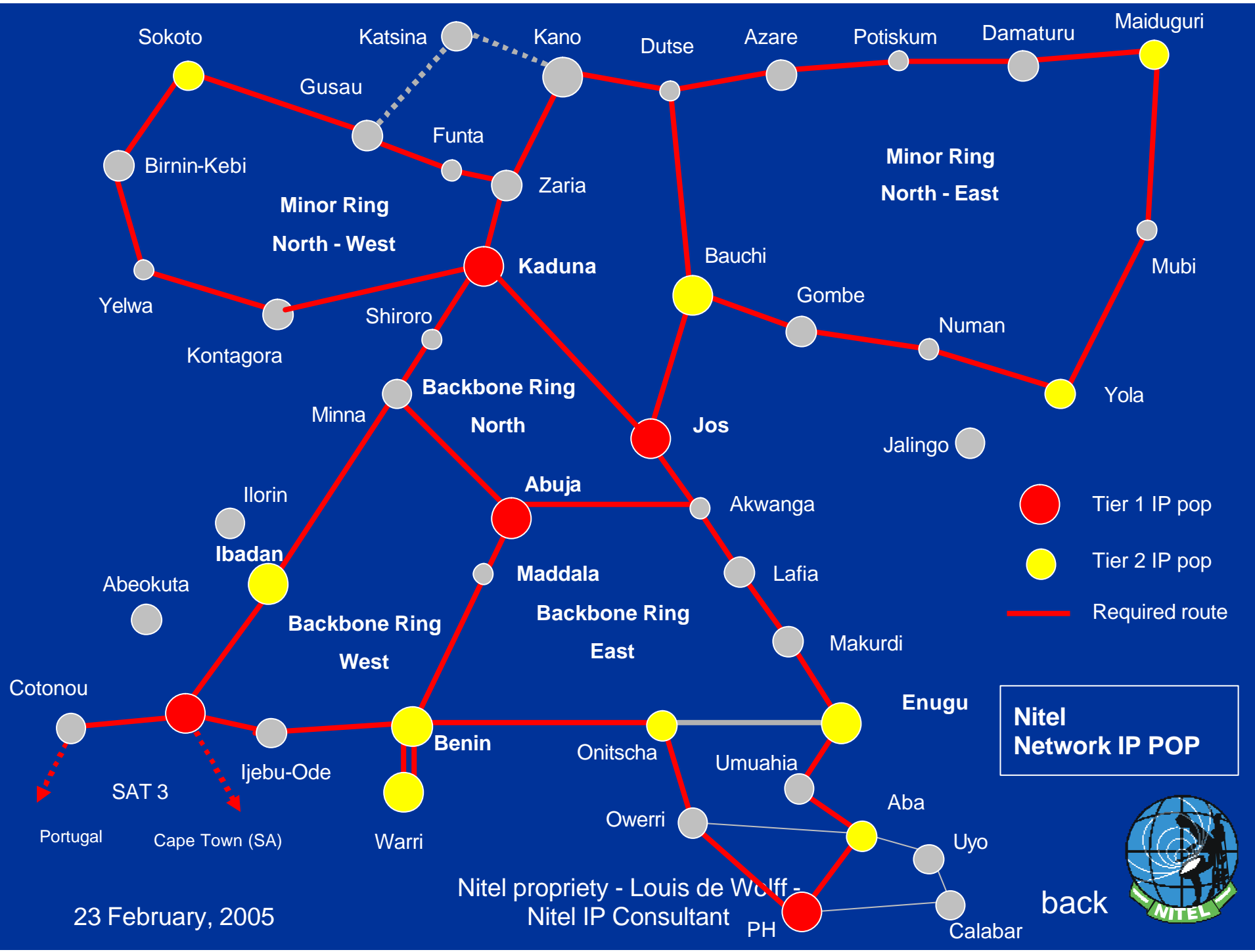
Nitel propriety - Louis de Wolff -
Nitel IP Consultant

Phase 3: Add PoPs



23 February, 2005

Nitel propriety - Louis de Wolff -
Nitel IP Consultant



**Nitel
Network IP POP**



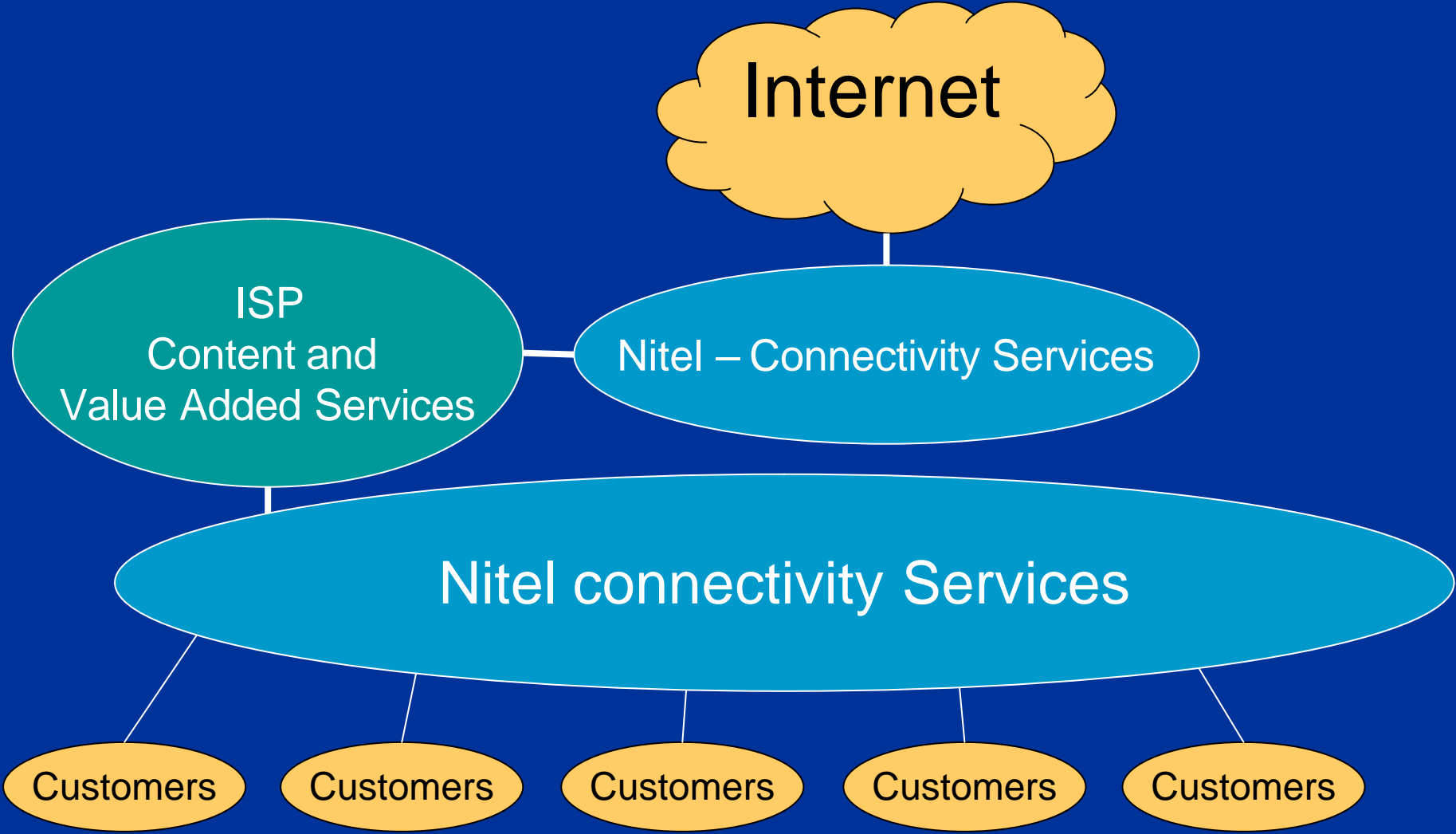
23 February, 2005

Nitel propriety - Louis de Wolff -
Nitel IP Consultant

back

PH Calabar

Connectivity Services



Targeted exchange areas for xDSL



<u>ABUJA TERRITORY</u>			<u>KWARA TERRITORY</u>			<u>RIVERS TERRITORY</u>		
1	Maitama	8.000	18	Ilorin	8.000	29	Portharcourt Central	10.000
2	Wuse	11.000	<u>BAUCHI TERRITORY</u>			<u>DELTA TERRITORY</u>		
3	Garki	9.000	19	Bauchi	7.000	30	Warri 'B'	8,000 8.000
4	Asokoro	6.000	<u>BORNO TERRITORY</u>			<u>EDO TERRITORY</u>		
5	Life Camp	2.438	20	Maiduguri	7.000	31	Benin Central	10,000 10.000
<u>LAGOS ISLAND TERRITORY</u>			<u>KADUNA TERRITORY</u>			<u>OYO TERRITORY</u>		
6	V/I 'D'	11.000	21	Kaduna 'B'	10.000	32	Ibadan 'C'	5,000 5.000
7	V/I 'A'	6.000	<u>KANO TERRITORY</u>			33	Bodija	9,000 9.000
8	IKOYI 'D'	6.000	22	Kano 'C'	19.000	34	Ring Road 'D'	10,000 10.000
9	Lagos 'D'	15.000	23	Kano 'D'	8.000			
10	Lagos 'E'	13.000	<u>SOKOTO TERRITORY</u>					
<u>IKEJA TERRITORY</u>			24	Sokoto	5.000			
11	Ikeja	22.000	<u>ABIA TERRITORY</u>					
12	Isolo (Digital)	6.000	25	Aba 'B'	9.000			
13	Isolo (Anal.)	7.000	<u>ANAMBRA TERRITORY</u>					
14	Agege	6.000	26	Awka 'B'	7,000 7.000			
<u>LAGOS MAINLAND TERRITORY</u>			<u>CROSS RIVER</u>					
15	Apapa	14.000	27	Calabar	6,000 6.000			
16	Casino	9.000	28	Enugu	10,000 10.000			
17	Iponri 'B'	8.000						

Proposed roll-out plan



			Implementation in six months					
ABUJA TERRITORY	Subscribers		1	2	3	4	5	6
1	Maitama	8.000	1					
2	Wuse	11.000			1			
3	Garki	9.000		1				
4	Asokoro	6.000	1					
5	Life Camp	2.438			1			
LAGOS ISLAND TERRITORY								
6	V/I 'D'	11.000				1		
7	V/I 'A'	6.000						1
8	IKOYI 'D'	6.000						1
9	Lagos 'D'	15.000	1					
10	Lagos 'E'	13.000			1			
IKEJA TERRITORY								
11	Ikeja	22.000	1					
12	Isolo (Digital)	6.000					1	
13	Isolo (Anal.)	7.000		1				
14	Agege	6.000					1	
LAGOS MAINLAND TERRITORY								
15	Apapa	14.000		1				
16	Casino	9.000				1		
17	Iponri 'B'	8.000				1		
			4	3	3	3	2	2



Future services

- IP VPN
- Content Distribution Services
 - Video On Demand
 - Remote Education
 - E-Commerce
 - E-medicine
 - Tele-conference
 - ...

Thank You

For further information:

email: ip-wholesale@nitelnet.com



Nitel propriety - Louis de Wolff -
NitEL IP Consultant